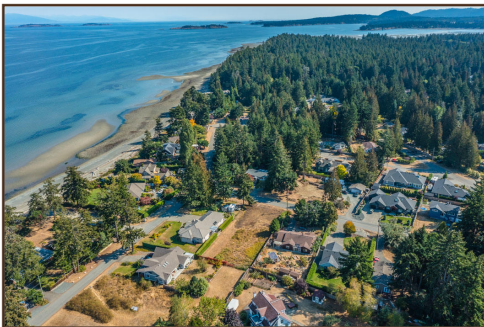


Superb San Pareil Bldg Lot

Lot A Shorewood Dr



Stunning San Pareil Building Lot Beach Access just Steps Away! Fabulously located just minutes away from downtown Parksville for shopping and amenities is the ever-popular neighborhood of San Pareil - a peaceful enclave known for its quiet safe streets, long sandy beaches, unparalleled access to nature-based recreational activities, and you're within a short walk of the Englishman River Estuary and beautiful Rath Trevor Beach Provincial Park. Tucked away on a quiet street and ready to be developed, this cleared and level building lot offers ample room for a larger home, the potential for some ocean views from a two-storey home, phone, water and hydro to the lot line are in place, and RS-1 Residential zoning also allows for a Secondary Suite and various home-based business ventures! You are virtually across the street from access to a beautiful beach boasting world-class views of the Georgia Strait, Lasqueti and Texada Islands, and the distant mainland mountains...a great spot to enjoy a family picnic on the



TEAM SUSAN FORREST
Real Estate Built on Relationships



PropertiesVancouverIsland.com
office: 250.947.9900
susan@susanforrest.com

Box 1059 173 West Island Hwy
Parksville BC V9P 2H1



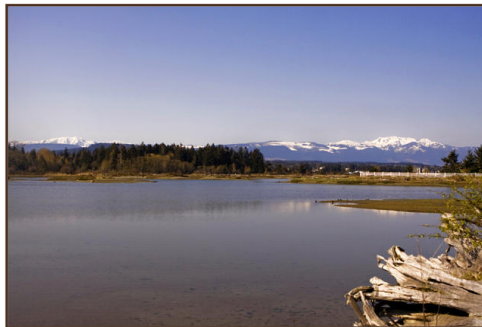
PARKVILLE · QUALICUM · NANOOSE · NANAIMO

Superb San Pareil Bldg Lot

Lot A Shorewood Dr



shore, or simply relax on a log and lose your thoughts in the gentle roar of the waves! The tranquil enclave of San Pareil is a nature lovers dream-come-true and offers access to an endless array of outdoor activities including kayaking, fishing, walking, hiking and biking! You're just a 5-minute stroll away from Rathtrevor Provincial Park with its oceanfront trails and shaded picnic grounds, and it's an easy 8-minute walk to the Englishman River Estuary for some bird-watching or a refreshing nature hike. It's a short drive to Qualicum Beach's charming Village Center, the massive North Nanaimo shopping district, and many of our tourist attractions including Coombs famous "Goats-on-the-Roof" Market, the towering ancient forests of Cathedral Grove, several lakes, and the ferries to several Gulf Islands. There are increasingly few San Pareil building lots near the beach left to develop...don't miss this great opportunity!



TEAM SUSAN FORREST
Real Estate Built on Relationships



PropertiesVancouverIsland.com
office: 250.947.9900
susan@susanforrest.com

Box 1059 173 West Island Hwy
Parkville BC V9P 2H1



PARKVILLE · QUALICUM · NANOOSE · NANAIMO



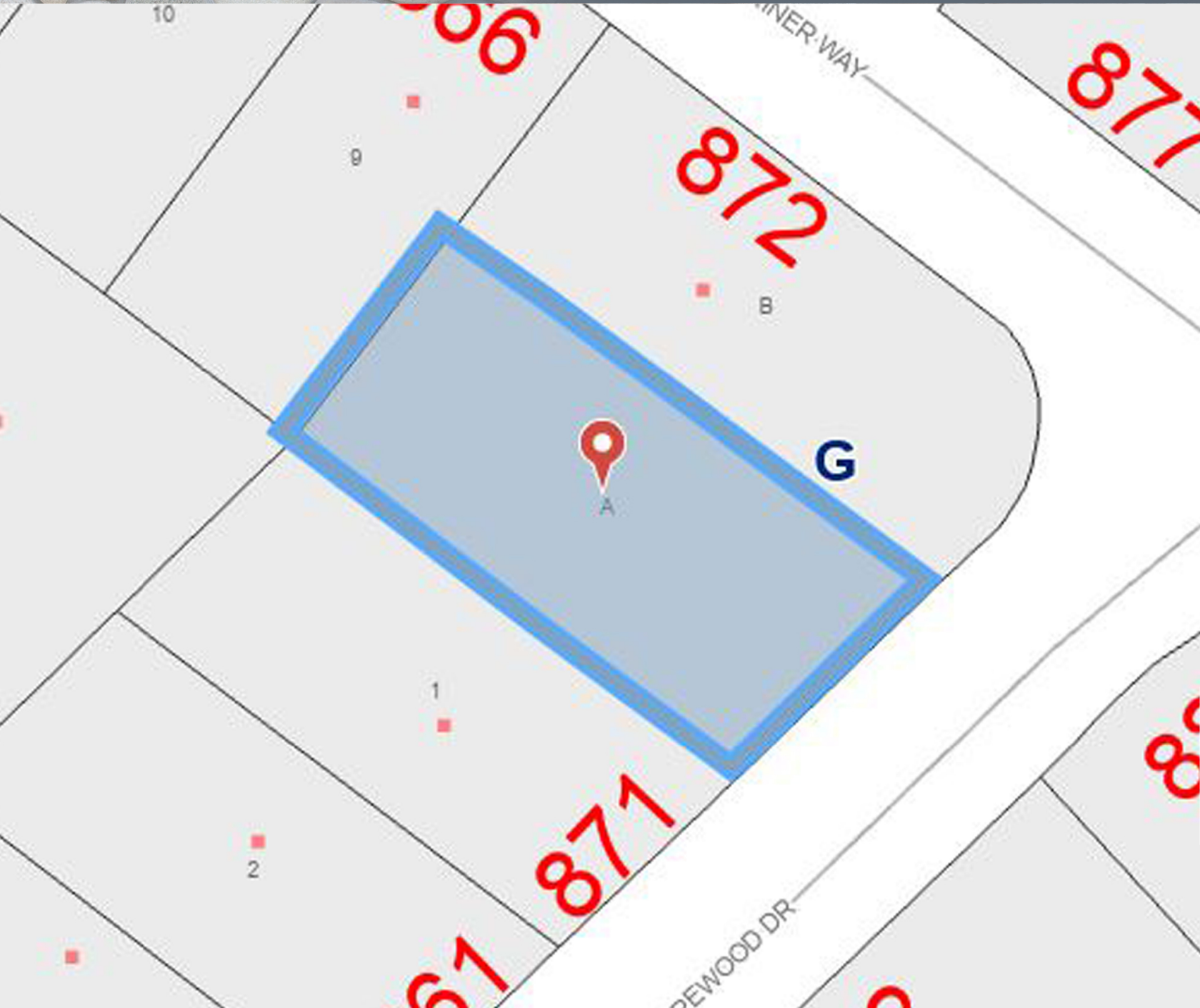
Superb San Pareil Bldg Lot

Lot A Shorewood Dr



Superb San Pareil Bldg Lot

Lot A Shorewood Dr



TEAM SUSAN FORREST
Real Estate Built on Relationships



PropertiesVancouverIsland.com
office: 250.947.9900
susan@susanforrest.com

Box 1059 173 West Island Hwy
Parksville BC V9P 2H1



PARKSVILLE · QUALICUM · NANOOSE · NANAIMO